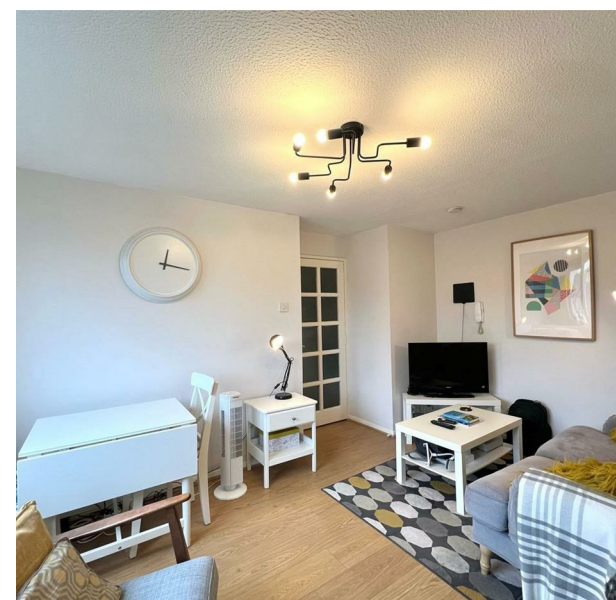


18 Green Pond Close, London, E17 6EF
£1,400 Per Month

COMPLETION
SALES & LETTINGS



18 Green Pond Close, London, E17 6EF

£1,400 Per Month

Council Tax Band: B

Nestled in the vibrant area of Walthamstow, this charming one-bedroom flat on Green Pond Close offers a delightful living experience. Available to let at a competitive price of £1,400 per calendar month, this purpose-built flat is perfect for individuals or couples seeking a comfortable and convenient home.

Spanning an area of 388 square feet, the flat features a well-proportioned reception room that provides a welcoming space for relaxation and entertainment. The bedroom is designed to be a peaceful retreat, ensuring a restful night's sleep. Additionally, the property includes a modern bathroom, catering to all your daily needs.

Constructed in 1980, this flat combines classic design with contemporary living, making it an ideal choice for those who appreciate both style and functionality. The location is particularly advantageous, with excellent transport links and a variety of local amenities just a stone's throw away, allowing for easy access to the









337 Forest Road
 London
 E17 5JR
 02085277007
enquiries@completion.co.uk
completion.co.uk

